



Fascinating in shape.
Functionally superb.



GERMAN
DESIGN
AWARD
WINNER
2022

markilux

The best under the sun



Plain and simple. Envable.

When closed, the markilux MX-2 gives the impression of being entirely in one piece. With or without LED lighting. Product design – at its best.



markilux MX-2 colour

Brilliantly coordinated and perfectly “covered”: ten fashionably modern colour combinations mean individuality and personality, complementing the architecture of the building, have to be seen and experienced.



Cassette awning

max. 600 × 300 cm

max. 500 × 350 cm

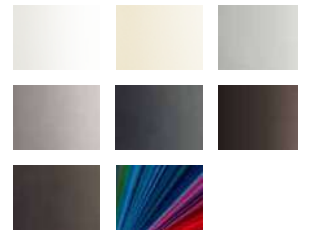
Arm technology

Bionic tendon

Options

LED Line in the cassette,
LED Spots under the cassette,
various standard colour
combinations

Awning Colours



Awning Cover Fabrics

